



GemCorp Recycling & Technologies Pvt. Ltd.
Navi Mumbai, India

***Circular
Economy
Market Makers***

***Blockchain &
QR-Based
Traceability***

***Recycling Plastic,
Metal, Paper, Wood,
Rubber and Glass***

***Solving the
problem of
waste collection***

***Uplifting Lives in
Developing Economies***

About Gemini

1989

Gemini Corporation N.V.
was founded

99 Credit
Rating

creditsafe

Board member of

ALLIANCE
TO END
PLASTIC
WASTE

Member of

Council for
INCLUSIVE
CAPITALISM

End-to-End Circular Economy

Collection & Recycling of over 2
million tonnes of material globally

500 Professionals
Worldwide

Headquartered in **Belgium**

3A1 Credit
Rating

dun&bradstreet

Core Competencies

Collection, Recycling, Sourcing, Logistics, Reprocessing, Finance & Documentation, Warehousing & Sorting Facilities.

We operate through 47 owned or affiliate offices with 50 warehouses in 36 countries.

Exporting over **100,000 TEUs** (Twenty-foot Equivalent Unit) per annum to and from more than 75 countries.

The group collects over **400,000 tonnes of recyclable plastics** from over 500 locations in 35 countries for reprocessing at over 250 plants in 40 countries. Apart from plastics, we give a second life to over **4 Billion pounds of rubber, metals and paper** including **50 Million tyres, 300,000 cars and 5 Million refrigerators.**

GEMINI



Core Idea - Circular Economy

GEMINI

1 Million
Tonnes

of plastic waste is
generated globally **every day**

By 2050

12 Billion
Tonnes

of plastic waste
will be generated

Less than

10%

of that will be
recycled

2000 Truck
loads

of plastic waste
every hour



Chairman

Surendra Patawari

Gemini Corporation N.V.

Mr. Surendra Patawari is the Founder and Chairman of Gemini Corporation. Mr. Patawari is based in Antwerp, Belgium, the headquarters of Gemini. Since 1989, under his leadership, Gemini has succeeded in becoming one of the world's leading circular economy market makers. He is very passionate about recycling and also gives great importance to social responsibility.

Gemini Corporation N.V.

Waterwilgweg 6 2050
Antwerpen, Belgium

info@gemincorp.be
www.gemincorp.be
+32 (0)3 254 04 14

Mr. Surendra Patawari is a Board Member of the global Alliance to End Plastic Waste (AEPW) and is a winner of several awards, viz. the US President's "E" Award, IERC Honorary Award, Global Business Leader Award (Institute of Chartered Accountants of India), Global Recycler of the Year (MRAI). Mr. Surendra Patawari is amongst the top 4 recyclers in the world as per Recycling International magazine.

He is an active participator in the Global Plastic Treaty and Government policy making decisions regarding Plastics and Circular Economy. He is also a key speaker at the World Economic Forum events and other industry associations like Fortune CEO Initiative, ISRI, BIR, BMR, MRAI, BVSE, ISWA etc.

Mr. Surendra believes in giving back and sharing with society. He has adopted 12 Indian villages for their medical needs. He has built two schools that now educate 400 students. Moreover, he has planted & maintained a green forest of 100,000 trees in the Indian desert.

GEMINI

“Waste is not waste
until it is wasted.
On the contrary,
it is a resource
full of opportunities.”

Surendra Patawari

Chairman



Gemcorp Recycling & Technologies

a subsidiary of Gemini Corporation N.V.



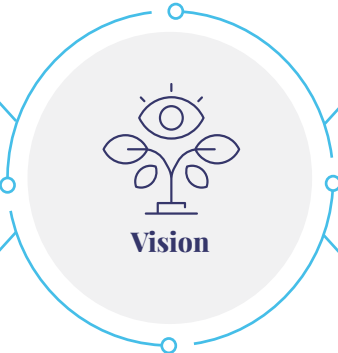
GemCorp seeks to strengthen the circular economy ecosystem in a just and equitable manner with focus on social upliftment, efficient logistics, provision for working capital, education, end-to-end traceability and on-ground action.

Responsible Recycler

Ensure that all waste collected is recycled by GemCorp or through PCB certified recyclers

Investors

Strengthen the value chain through machinery, infrastructure & financial support



Supply Chain Experts

Provide end-to-end transparency & traceability to ensure businesses meet compliance

Collection Services

Partnership with small aggregators to big industries for waste collection

End-to-End Circular Economy Services

The GemCorp Journey



“Creating sustainable infrastructure to enable long term recycling solutions in developing economies”



Solving the issue of waste collection by building collection network



Uplifting

10 Families per week

Target to uplift 1000 families

Collection & Recycling

180,000 Tonnes

of scrap annually

Installing

400 Baling machines

to increase recycling

Transparent & Traceable

Supply Chain

No Child Labour, Guaranteed Fair Wages, Sanitation, Health & Safety, Insurance

Increasing the monthly collection volume by

4 Times

for local informal collectors

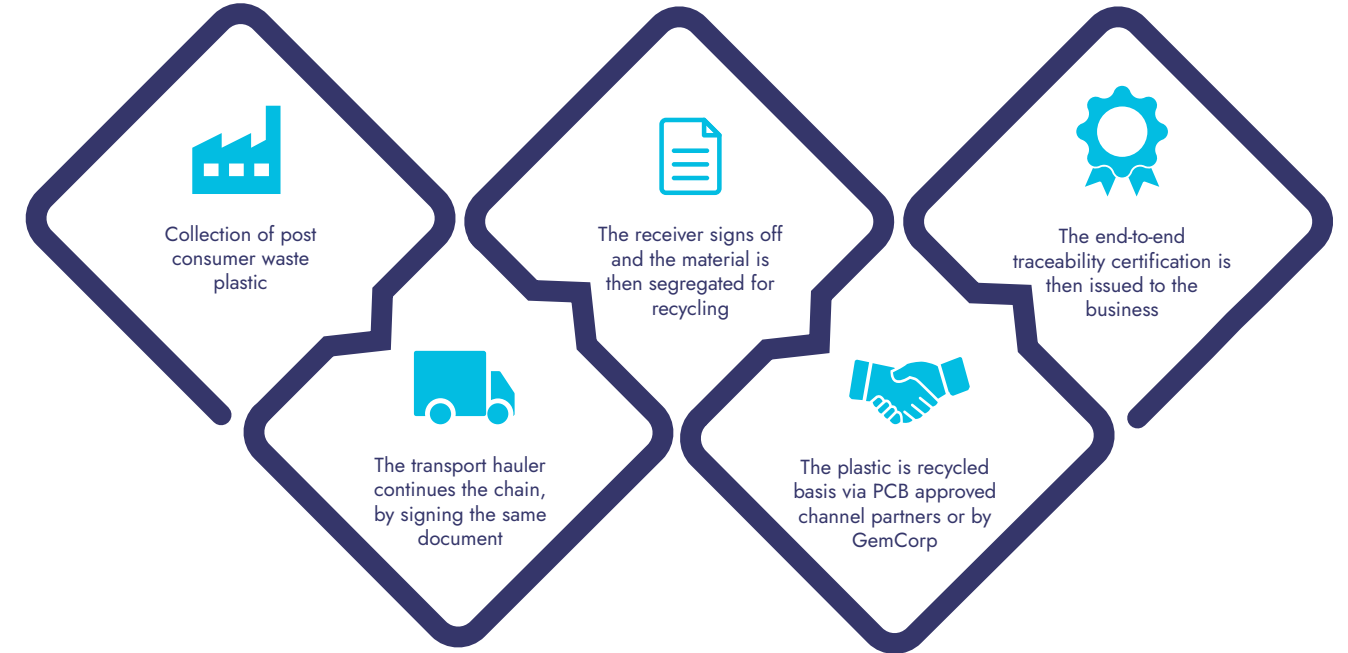
Setting up

21 Mini recycling plants

in India and helping brands achieve Global Sustainability & Recycling goals

New plant coming up in Gujarat, India

EPR & Traceability



ReMake® - Plastic Credit Program



ReMake Plastic Credits

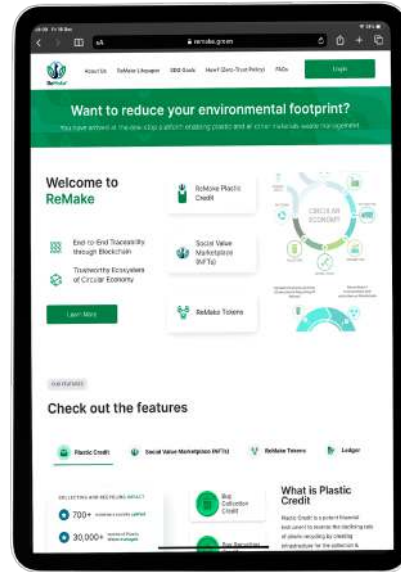
Measurable
Verifiable
Transferable

units of plastic that has been collected from the environment or recycled.

The mechanism on which the ReMake program is developed:

- ✓ Technology
- ✓ Social Value Creation
- ✓ Financial Ingenuity
- ✓ ReMake Standards & Governance

ReMake Platform for plastic credit program



Blockchain-based ReMake Plastic Credit Certificate



UniGem® - The Digital Marketplace



Reliable
Blockchain-based
End-to-end Traceable

marketplace for EPR and Plastic credits.

The blockchain system provides QR-based tracking system and unique hash keys to identify and ensure that the integrity & reliability of the waste collection and recycling data and confirms the circular loop.

©UniGem is a registered trademark of GemCorp Recycling and Technologies Pvt. Ltd.



- Seller
- Buyer
- EPR
- Traceability
- Procure Machines
- No fees

©ReMake is a registered trademark of Gemini Corporation N.V.



Our Circular Economy Products

Plastics

Recyclable plastics & near Prime Resins, Global sourcing & supply of Off-Grade & Reprocessed Plastics.



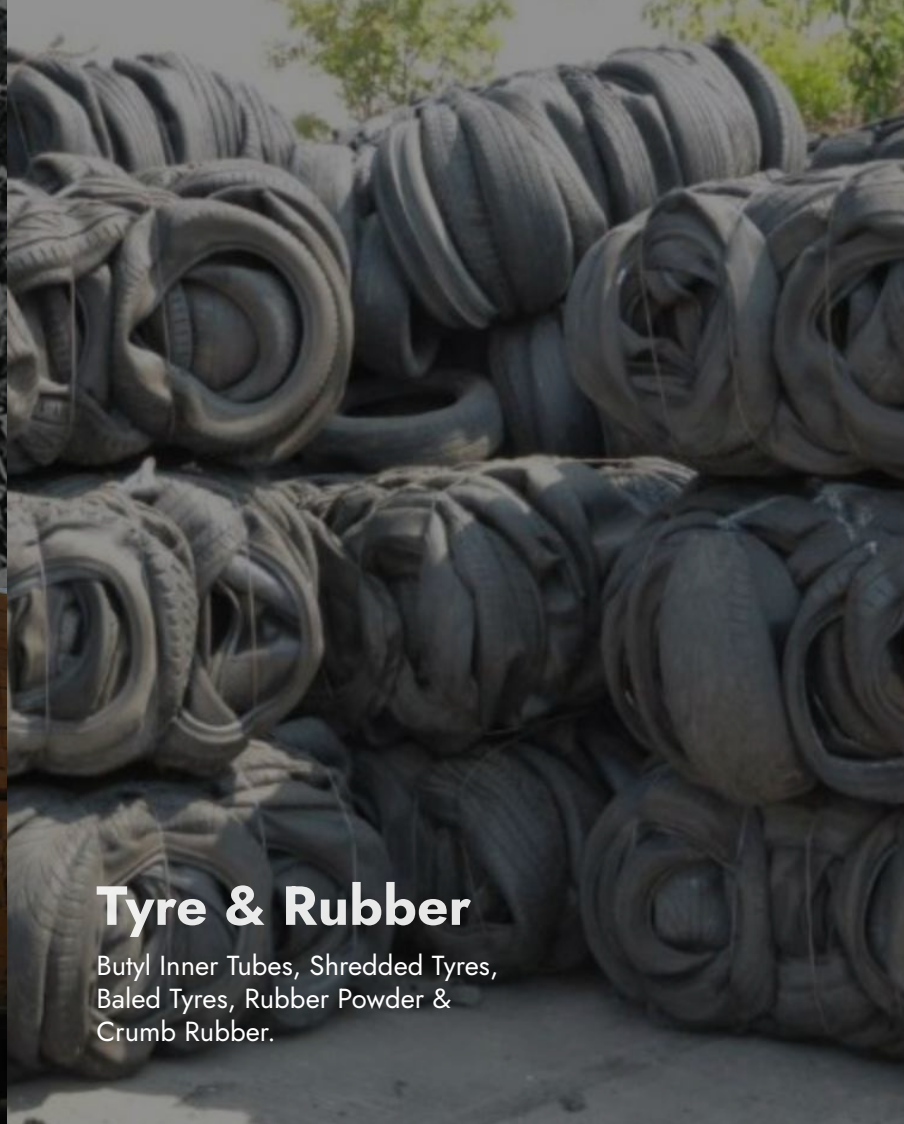
Metals

Recycling and supply chain management which includes Raw Materials, Second Choice and Prime.



Wood

Medium Density Fiber Boards, Chipboards, Logs, Timber/ Lumber, Pallets.



Tyre & Rubber

Butyl Inner Tubes, Shredded Tyres, Baled Tyres, Rubber Powder & Crumb Rubber.



Paper

Prime Paper, Production Waste & Stock Lot Paper.



Glass

Bottles & Cullets.

Baling Program

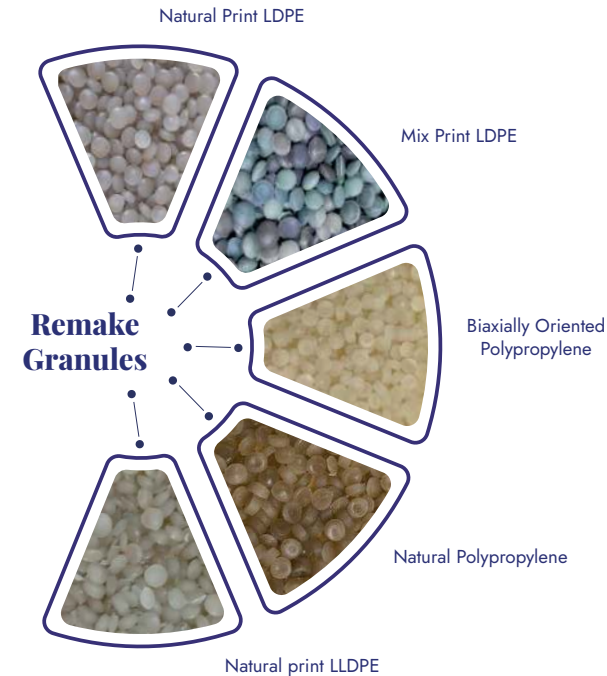


Closing the Loop



Remake Granules

Clean plastic materials are fed into a cutting device and reduced to tiny fragments. The sliced pieces are placed in an extruder, where they are melted and turned into lumps of granules.



Remake Packaging

GemCorp produces post-consumer recycled based ReMake packaging products and supplies it to institutional clients.

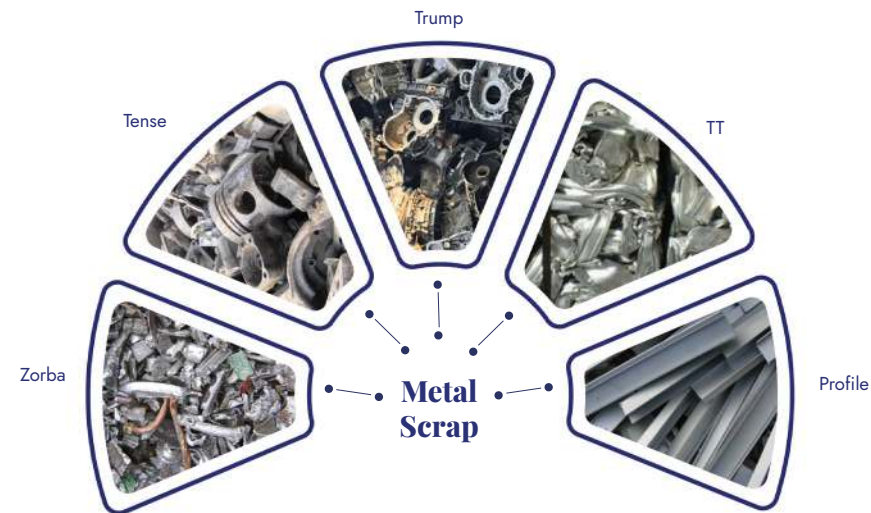


Metal Recycling Business

Handling

42,000 Tonnes of metal scrap annually

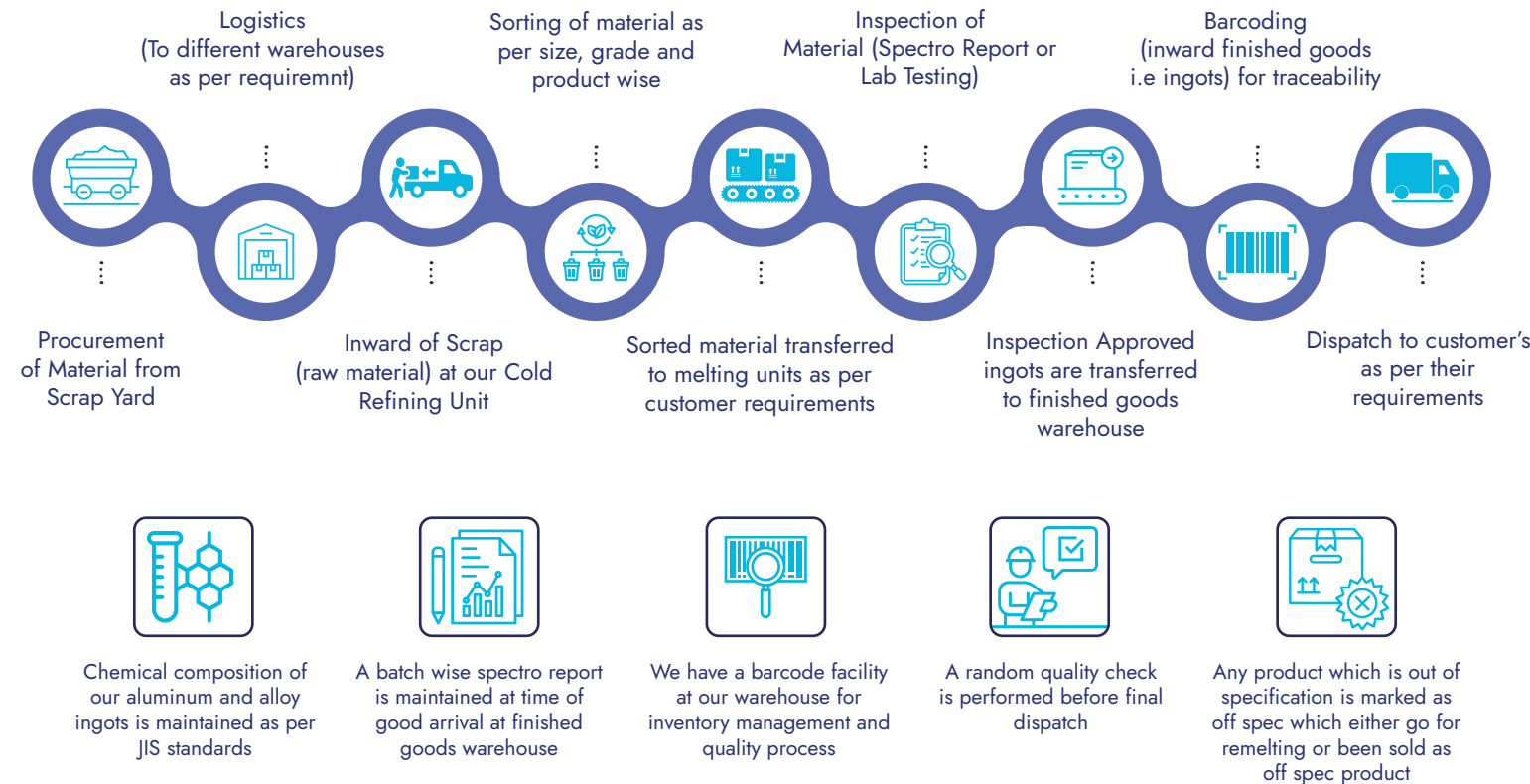
We have our Cold Refining Unit which handles feed of mix metals scrap that includes Zorba, Tense, Trump, Profile, TT, Talic, etc



Converting clean sorted Aluminium scrap to Aluminium Ingots & Billets, (ADC-12, LM-2, LM-6, LM-24, 6063/6061 Billets- 4"/5"/6" Dia, Customized Alloys, Zinc Ingots, Copper Ingots, Production of Secondary Aluminum Alloy Ingots and 96-98% Aluminum Ingots, Aluminum Notch bar and Deox cubes) at our Partner Melting Units.



Manufacturing Process



Institutional Recycling



Ensuring
End-to-end
recycling of institutional waste for
major brands in FMCG, Beverages
and e-Commerce

Providing
Traceability
of the material from collection
until recycling

Complying
100% with
regional laws

Implementing
Global Best
Practices

Fulfilling
EPR for renowned
brands



Waste Recycling Program



Plant-Waste Management

Institutional waste management with an intent to reduce waste going into oceans and landfills. Recycles the collected waste through the partner recyclers or by installing machines at the institutional units. Participates in various Tenders, and E-auctions held by the brands for their waste management activities.



Event Waste

Zero waste events are trending worldwide, and GemCorp is here to support and host them. By working with GemCorp, the client can ensure that the event complies with all local laws during the process and protects the environment.



Infrastructure Dismantling

GemCorp has experience in infrastructure demolition and dismantling across a variety of market sectors and industries. GemCorp has a dedicated management and operations staff, a proprietary specialty equipment fleet, and robust safety culture to deliver quality and value to the customers.

Reclaimers Outreach Program



There are approximately

4 million waste pickers

across India who make a living through picking up, cleaning, sorting and segregating recyclable waste.

GemCorp is committed towards improving the working conditions of waste aggregators by providing better infrastructure and training and ensuring they have proper IDs, bank accounts, and social security benefits.

GemCorp identifies waste collectors and their families through its associated baler facilities and provides them with monthly groceries and toys for their children, clothes, footwear, schoolbooks, etc.

Until now we have uplifted more than

1000 families.



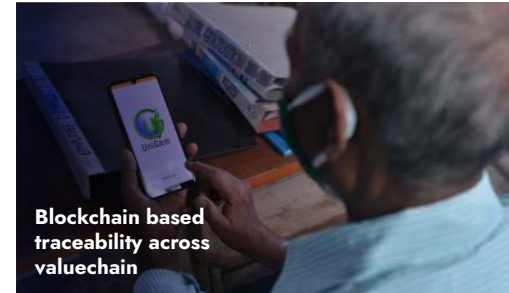
Working with reclaimers at the grassroots level to bring them to an organised sector



Installation of Baling machines free of cost at collection centres



Training and upskilling



Blockchain based traceability across valuechain



No Child Labour and providing minimum wages



Safety and sanitation



Overall upliftment of the reclaimers

Our Plants



Ahmedabad

Shed No. 315, GVMM Industrial Estate,
Odhav, Ahmedabad, 382410



Ahmedabad

Survey No. 1158, Near Prince Industrial
Hub, Kothia Gam, Indore Highway, Kuha,
Ahmedabad, 382433



Bengaluru

Plot No. 58, Chikkaluru, Venkatapura Village,
Tavarekere Hobil, Bengaluru south, 562130



Bhiwadi- Rajasthan

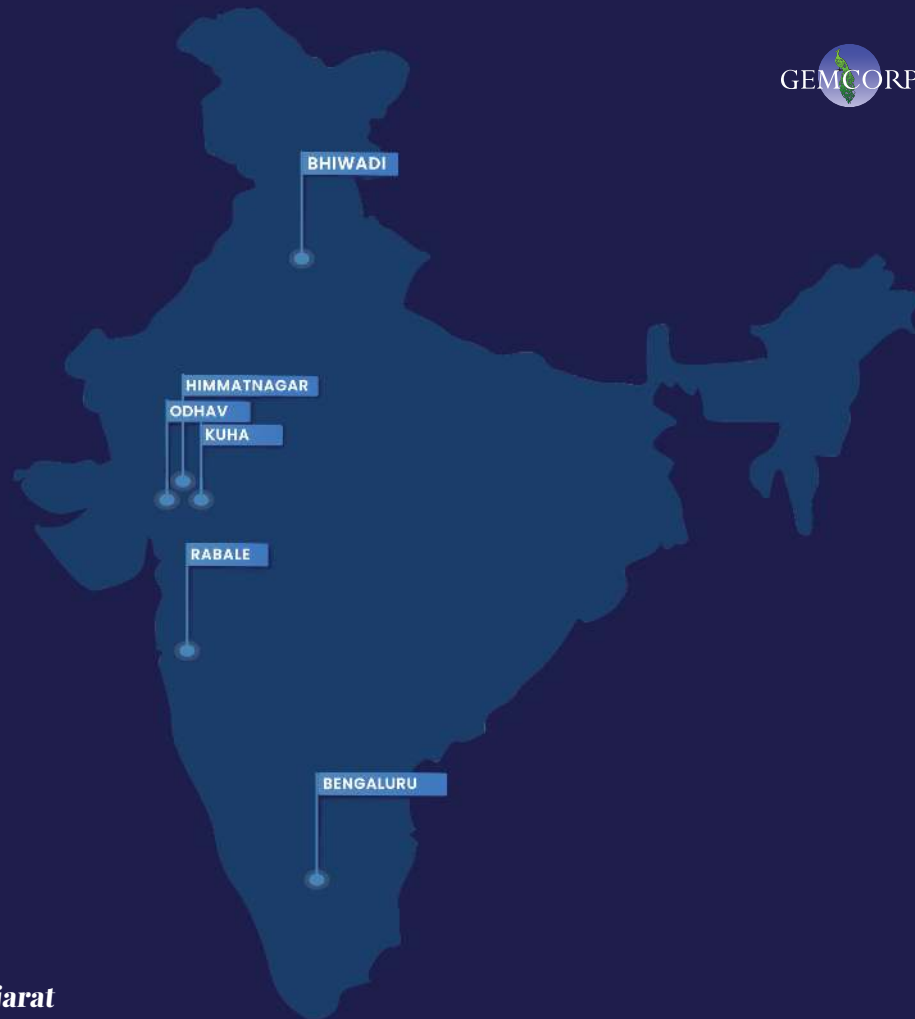
Plot No. B-35 (A-5), Riico Industrial Area,
Khushkhera, Alwar, Rajasthan, 301019



Navi Mumbai

Plot No. R - 724/A&B, T.T.C. Industrial Area,
Rabale, Navi Mumbai, Maharashtra, 400701

Upcoming new plant in Himmatnagar, Gujarat



Contact

GemCorp Recycling & Technologies Private Limited

Unit No. 701, Akshar Bluechip Corporate Park,

Plot No-D-263, TTC Industrial Area, Turbhe,

Navi Mumbai, Maharashtra, 400705

info@gemcorprecycling.com

www.gemcorprecycling.com



<https://www.facebook.com/people/GemCorp-Recycling-Technologies-Pvt-Ltd/100054805748327/>



<https://twitter.com/gemcorpltd>



<https://youtube.com/@geminirecycling8634>



<https://www.linkedin.com/company/gemcorp-recycling-technologies/mycompany/>



RECYCLING

SOURCING

LOGISTICS

REPROCESSING

FINANCE AND DOCUMENTATION

WAREHOUSING

SORTING FACILITIES

